



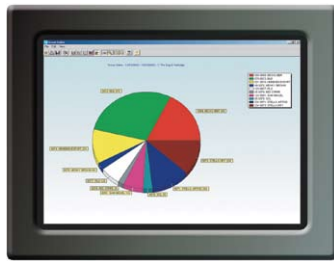
## Software

# EPOS Office

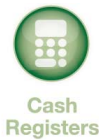
### Reporting - EPOS Management & Stock Control

Designed for maximum control over your EPOS terminals, the EPOS Office suite puts you firmly in control over the point of service and delivers key business information to help make quick and timely decisions. Easy to navigate screens make product and price changes quick and simple to implement, allowing businesses to react swiftly to market demands or trends, whether it's updating menus, adding new product lines or programming new prices.

Capable of managing single or multi-site operations in hospitality or retail, EPOS Office is a scalable solution that can grow as your business develops, helping you protect your investment in the Uniwel EPOS terminals.



PCPOS  
Hardware



Cash  
Registers



EPOS  
Systems



Software



HandHeld



Peripherals

## EPOS Office - Features at a Glance

**Powerful EPOS Management:** Complete control over your EPOS terminals to allow business decisions to be implemented quickly, whether its staff changes, menu updates, new products, price increases, or systems changes.

**Remote Communications:** Software can be installed on or off-site allowing changes to be made from the comfort of your office wherever it may be.

**Automated Report Collection:** Automated report collection at the end of shift and end of day.

**Business Intelligence:** A selection of detailed reports to help you deliver business performance and generate greater profits.

**Barcode Labelling:** Design and generate your own in-house barcode labels.

**Multiple Price Files:** Allow price schemes to be created for specific times throughout the day and different prices for days of the week.

**Daily and Weekly Business Sheets:** Secure control over cash, takings and cash shortfalls are immediately highlighted.

**Stock Control:** Orders, deliveries, returns and wastage functions to minimise shrinkage and stock loss.

**Recipes and Cocktails:** Use the system to manage recipes, cocktails and ingredient stocks.

**Automatic Ordering:** Use the system to generate orders based on stock levels or sales trends. Email or fax orders direct to suppliers.

### Reports include

- Sales and profit
- Sales mix
- Weekly business sheets
- Cash variance
- Promotional loss
- Operator analysis
- Time and attendance
- Stock holding and valuation

### Applications

- Bar
- Nightclub
- Restaurant
- Quick Service
- Catering
- Retail



# Software Specification

## EPOS Office - Business Intelligence

**Operator Analysis:** Highlight the most productive / unproductive staff members to award commission or identify training needs. Track sales, voids, corrections, refunds and no sales by operator.

**Time and Attendance:** Monitors the hours staff work using the clock-in / out functions of the POS.

**Electronic Journal:** Keep a record of your audit roll on your PC for future reference.

**Multi-Site Reporting:** Analyse sales from multiple sites, individual and consolidated sales reports are available, with the ability to drill down further.

**Historical Analysis:** Analyse sales trends over days, weeks, months or years.

**3D Charting Tools:** In built charting tools.

**Report Generator:** Optional module to provide custom reports and advanced analysis.

**Weekly Summary:** Your weekly business done sheet, looking at sales receipts, total income, expenses and banking on a day by day basis for the week.

**Cash Variance:** Compares the cash expected against the actual cash received, helping trace cash variances.

**Sales & Profit Reports:** Actual product sales and profitability by date range, for individual or consolidated sites and locations.

**Sales Mix:** Itemised sales volumes and percentages by date range.

**Promotional Loss:** Make sure your promotions are working for you, this report compares the difference between the RRP and the actual sales values after discounts and promotions.



[www.uniwell.co.uk/eposoffice](http://www.uniwell.co.uk/eposoffice)

## EPOS Office - Stock Reporting

**Stock Holding:** Keeps track of the stock holding by item, including deliveries and usage.

**Stock Valuation:** Current stock valuation at cost and retail price.

**Stocktake Variance:** Highlights stock losses with valuations at cost and retail price.

**Suggested Order:** Highlights stock below minimum levels.

**Stock Audit:** Keeps track of all stock movements.

**Stocktaking:** Periodic stocktaking provides trading results for the period, highlighting performance, stock variances and wastage.

## Interfaces & Modules

- Hand held stocktaking module
- DataSmart web based reporting service
- MS Word and Excel
- EPOS Journal Viewer
- EPOS Reports
- EPOS Office HQ

## System

- Windows 95, 98, NT4.0, 2000 and XP/XP Pro, Vista
- TCP/IP or RS232 interface to POS
- Online help and product tour
- Password protected – individual user options with full audit trail
- User security rights, ability to restrict user access to individual functions
- Single site stock system, upgrade path to EPOS-MS for multi-site stock systems

## To find out more

For more information on EPOS Office and the full range of Uniwell products please visit: [www.uniwell.co.uk](http://www.uniwell.co.uk)

To find details of your nearest Uniwell reseller, please contact us using the following details:

### Uniwell Systems (UK) Ltd

Uniwell Building  
Greenbank Technology Park  
Challenge Way  
Blackburn, Lancashire BB1 5US

T: 0845 602 4347

E: [sales@uniwell.co.uk](mailto:sales@uniwell.co.uk)

## About Uniwell

Uniwell Systems (UK) Ltd is a leading value added distributor of EPOS hardware, software and peripherals.

We have been supplying EPOS systems to the hospitality and retail markets for over 20 years and are part of the Uniwell Corporation global distribution network.