



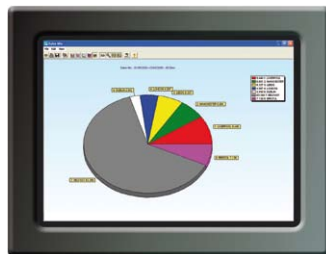
## Software

# EPOS MS

### Reporting - EPOS Management & Multi-Site Stock

Designed for multiple outlet operators EPOS MS offers maximum control over your EPOS terminals and stock control processes, providing sales, stock and staff analysis to aid in the management of multiple outlets from a central back office. Easy to navigate screens make product and price changes quick and simple to implement, allowing businesses to react swiftly to market demands or trends, whether it's updating menus, adding new product lines or programming new prices.

Capable of handling up to thirty separate outlets EPOS MS puts you firmly in control over the point of service and delivers key business information to help make quick and timely decisions.



PCPOS  
Hardware



Cash  
Registers



EPOS  
Systems



Software



HandHeld



Peripherals

## EPOS MS - Features at a Glance

**Powerful EPOS Management:** Complete control over your EPOS terminals to implement business decisions quickly, whether its menu updates, new products, price increases, or systems changes.

**Remote Communications:** Software can be installed on or off-site allowing changes to be made from the comfort of your office wherever it may be.

**Automated Report Collection:** Automated report collection at the end of shift and end of day.

**Clever and Simple to use Menu System:** Helps you to successfully run your business with minimal time and effort.

**Multiple Price Bands:** Link outlets to price bands for easier price management. Prices files allow different prices for specific times throughout the day and different prices for days of the week.

**Daily & Weekly Business Sheets:** Secure control over cash, takings and cash shortfalls are immediately highlighted.

**Stock Control:** Orders, deliveries, returns and wastage functions to minimise shrinkage and stock loss.

**Stock Transfers:** Manage stock transfers between outlets.

**Recipes and Cocktails:** Use the system to manage recipes, cocktails and ingredient stocks.

**Automatic Ordering:** Use the system to generate orders based on stock levels or sales trends. Email or fax orders direct to suppliers.

### Reports include

- Area, Concept, Branch analysis
- Sales mix drilldown
- Weekly business done
- Top sellers report
- Banking
- Cash variance
- Promotion analysis
- Stock reports

### Applications

- Bar
- Nightclub
- Restaurant
- Quick Service
- Catering
- Retail



# Software Specification

## EPOS MS - Business Intelligence

**Operator Analysis:** Highlight the most productive / unproductive staff members to award commission or identify training needs. Track sales, voids, corrections, refunds and no sales by operator.

**Time & Attendance:** Monitors the hours staff work using the clock-in / out functions of the POS.

**Electronic Journal:** Keep a record of your audit roll on your PC for future reference.

**Multi-Site Reporting:** Analyse sales from multiple sites, individual and consolidated sales reports are available, with the ability to drill down further.

**Historical Analysis:** Analyse sales trends over days, weeks, months or years.

**3D Charting Tools:** In built charting tools.

**Top Sellers:** Report on top selling items.

**Site Comparison:** Compare site performance.

**Report Generator:** Optional module to provide custom reports and advanced analysis.

**Area and Concept Reporting:** Monitor the activities of geographical areas or business unit concepts.

**Sales Mix Drilldown:** View the big picture then drill down for itemised sales volumes and percentages by date range.

**Weekly Summary:** Your weekly business done sheet, looking at sales receipts, total income, expenses and banking on a day by day basis for the week.

**Cash Variance:** Compares the cash expected against the actual cash received, helping trace cash variances.

**Sales & Profit Reports:** Actual product sales and profitability by date range, for individual or consolidated sites and locations.

**Promotional Loss:** Make sure your promotions are working for you, this report compares the difference between the RRP and the actual sales values after discounts and promotions.



[www.uniwell.co.uk/eposms](http://www.uniwell.co.uk/eposms)

## EPOS MS - Stock Reporting

**Stock Holding:** Keeps track of the stock holding by item, including deliveries and usage.

**Stock Valuation:** Current stock valuation at cost and retail price.

**Stocktake Variance:** Highlights stock losses with valuations at cost and retail price.

**Suggested Order:** Highlights stock below minimum levels.

**Stock Audit:** Keeps track of all stock movements.

**Stocktaking:** Periodic stocktaking provides trading results for the period, highlighting performance, stock variances and wastage.

## Interfaces & Modules

- DataSmart web based reporting service
- MS Word and Excel
- EPOS Journal Viewer
- EPOS Reports

## System

- Windows 95, 98, NT4.0, 2000 and XP/XP Pro, Vista
- TCP/IP or RS232 interface to POS
- Online help and product tour
- Password protected – individual user options with full audit trail
- User security rights, ability to restrict user access to individual functions
- Multi site stock system available
- Bespoke EPOS management and reporting solutions available for larger estates

## To find out more

For more information on EPOS MS and the full range of Uniwell products please visit: [www.uniwell.co.uk](http://www.uniwell.co.uk)

To find details of your nearest Uniwell reseller, please contact us using the following details:

**Uniwell Systems (UK) Ltd**  
Uniwell Building  
Greenbank Technology Park  
Challenge Way  
Blackburn, Lancashire BB1 5US

**T:** 0845 602 4347  
**E:** [sales@uniwell.co.uk](mailto:sales@uniwell.co.uk)

## About Uniwell

Uniwell Systems (UK) Ltd is a leading value added distributor of EPOS hardware, software and peripherals.

We have been supplying EPOS systems to the hospitality and retail markets for over 20 years and are part of the Uniwell Corporation global distribution network.